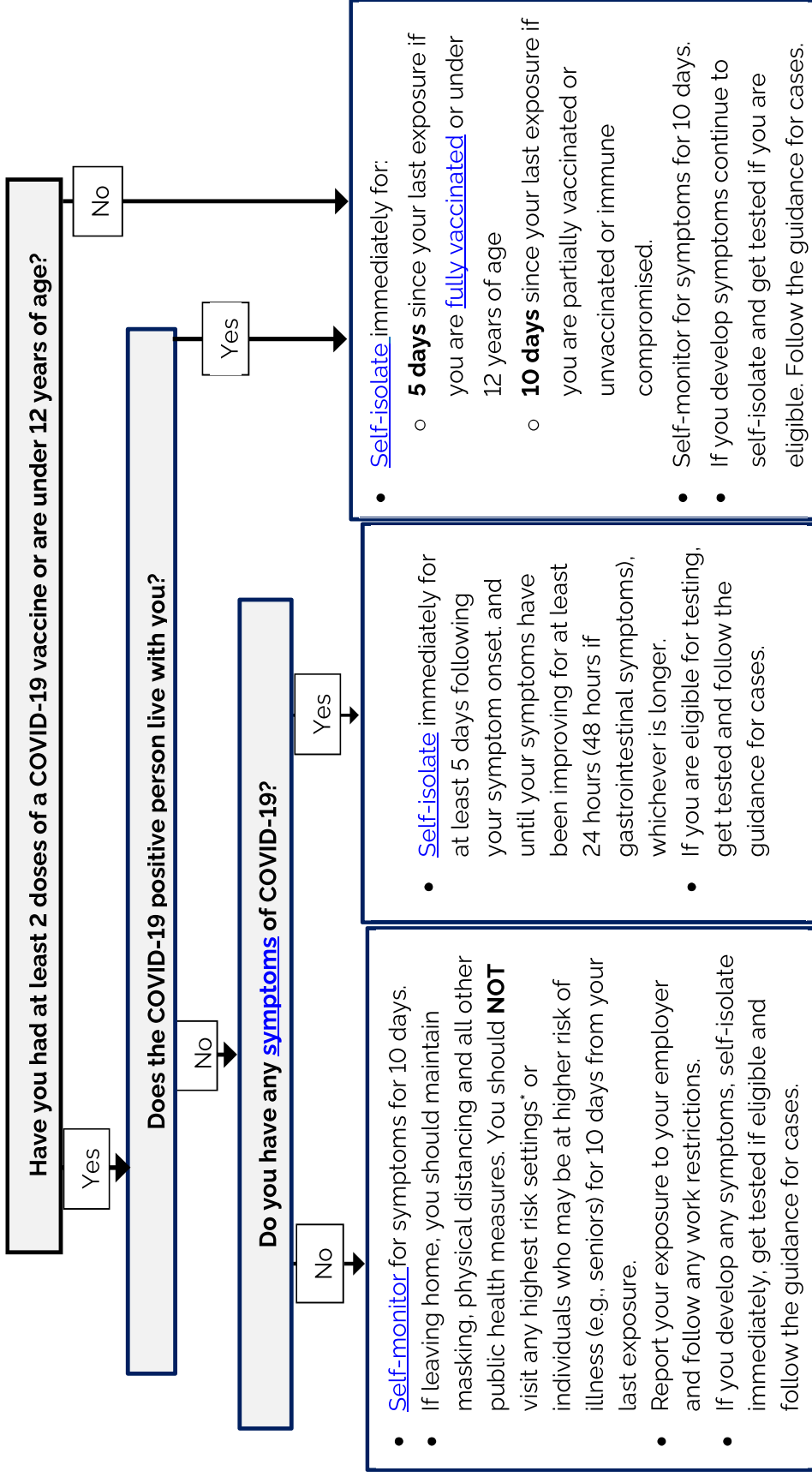


You've been exposed to someone who has tested positive for COVID-19 on PCR, rapid molecular, or rapid antigen test. Now what?

This guidance does not apply to individuals who live, work, volunteer or are admitted in a highest risk setting*



*Highest risk settings include hospitals, Long-Term Care, retirement homes, health care workers providing care to immunocompromised, congregate living settings

Note: In the context of Omicron, individuals who are previously positive in the last 90 days and not fully vaccinated are **not** considered equivalent to fully vaccinated.