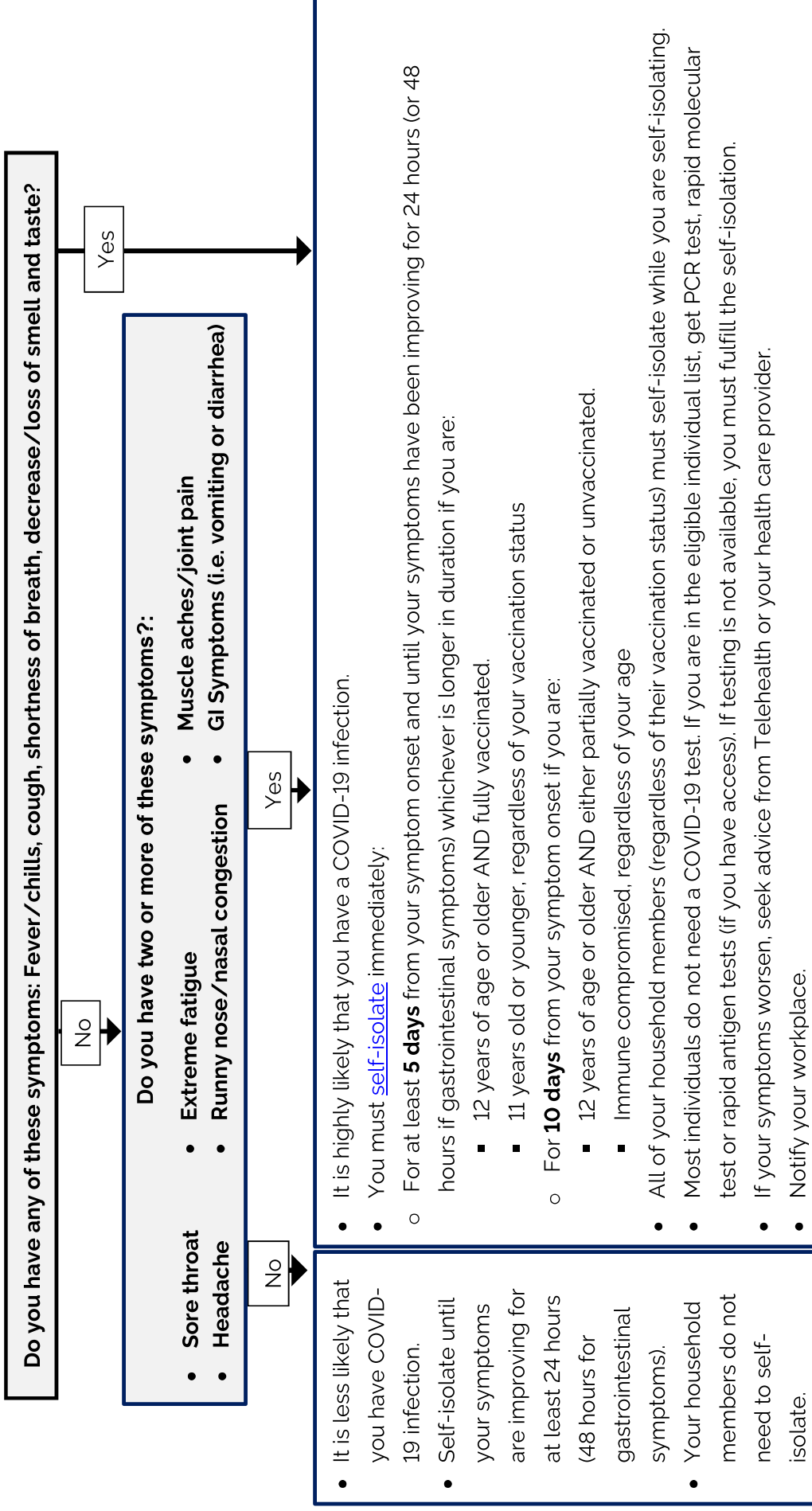


## You have symptoms and are concerned you may have COVID-19. Now what?

This guidance does not apply to individuals who live, work, volunteer or are admitted in a highest risk setting\*



\*Highest risk settings/individuals include hospitals, Long-Term Care, retirement homes, congregate living settings, and health care workers providing care to immunocompromised people.

**Note:** In the context of Omicron, individuals who are previously positive in the last 90 days and not fully vaccinated are **not** considered equivalent to fully vaccinated.